



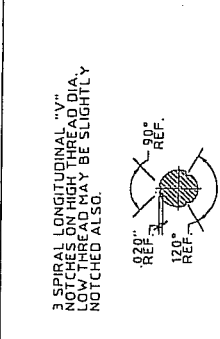
KNEZEVICH & ASSOCIATES, INC.
 CONSULTING ENGINEERS - PRODUCT TESTING
 1160 N. UNIVERSITY DRIVE, SUITE 180 - FORT LAUDERDALE, FL 33222
 TEL: (954) 382-2800 - FAX: (954) 382-2999 - WWW.KNEZEVICH.COM
 WEBSITE: WWW.KNEZEVICH.COM - E-MAIL: K@KNEZEVICH.COM
 COPYRIGHT © 2002 KNEZEVICH & ASSOCIATES, INC.

ELCO TAPCON
 CONSTRUCTION PRODUCTS DIVISION
 5110 FALCON ROAD
 BOKOR, FL 33428
 TEL: (407) 488-7213 - FAX: (407) 488-7000

APPROVED BY
 PROFESSIONAL ENGINEER
 FL License No. 00000000
 AUG 05 2002

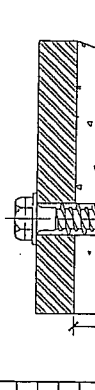
NO.	DESCRIPTION	DATE
1	GENERAL DESIGN	03/30/01
2	REVISIONS	
3	REVISIONS	
4	REVISIONS	
5	REVISIONS	
6	REVISIONS	
7	REVISIONS	
8	REVISIONS	
9	REVISIONS	
10	REVISIONS	

DATE: 03/30/01
 DRAWN BY: [Signature]
 CHECKED BY: [Signature]
 APPROVED BY: [Signature]
01-259
 SHEET 1 OF 2



HIGH THREAD SECTION FOR ALL ANCHORS

LENGTH	"A"	"B"
1-3/4"	1.750"	1.500"
2-1/4"	2.250"	1.750"
2-3/4"	2.750"	1.750"
3-1/4"	3.250"	1.750"



TYPICAL SECTION

LENGTH	"A"	"B"
1-1/4"	1.250"	.875"
1-3/4"	1.750"	1.313"
2-1/4"	2.250"	1.750"
2-3/4"	2.750"	1.750"
3-1/4"	3.250"	1.750"
4"	4.000"	1.750"
5"	5.000"	1.750"
6"	6.000"	1.750"

LENGTH	"A"	"B"
1-3/4"	1.750"	1.313"
2-3/4"	2.750"	1.750"
3-1/4"	3.250"	1.750"
3-3/4"	3.750"	1.750"

LENGTH	"A"	"B"
1-1/4"	1.250"	1.000"
1-3/4"	1.750"	1.500"
2-1/4"	2.250"	1.750"
2-3/4"	2.750"	1.750"
3-1/4"	3.250"	1.750"
4"	4.000"	1.750"
5"	5.000"	1.750"
6"	6.000"	1.750"

ANCHOR EMBEDMENT DEPTH	CONCRETE TENSION	HOLLOW CONCRETE BLOCK TENSION
1	206	-
1-1/4	207	-
1-1/2	256	235
1-3/4	269	184
2	370	-
2-1/4	462	218
2-3/4	465	398
3	475	330

ANCHOR EMBEDMENT DEPTH	CONCRETE SHEAR
1	206
1-1/4	207
1-1/2	256
1-3/4	269
2	370
2-1/4	462
2-3/4	465
3	475

ANCHOR EMBEDMENT DEPTH	CONCRETE SHEAR
1	206
1-1/4	207
1-1/2	256
1-3/4	269
2	370
2-1/4	462
2-3/4	465
3	475

ANCHOR EMBEDMENT DEPTH	CONCRETE SHEAR
1	206
1-1/4	207
1-1/2	256
1-3/4	269
2	370
2-1/4	462
2-3/4	465
3	475

ANCHOR EMBEDMENT DEPTH	CONCRETE SHEAR
1	206
1-1/4	207
1-1/2	256
1-3/4	269
2	370
2-1/4	462
2-3/4	465
3	475

ANCHOR EMBEDMENT DEPTH	CONCRETE SHEAR
1	206
1-1/4	207
1-1/2	256
1-3/4	269
2	370
2-1/4	462
2-3/4	465
3	475

ANCHOR EMBEDMENT DEPTH	CONCRETE SHEAR
1	206
1-1/4	207
1-1/2	256
1-3/4	269
2	370
2-1/4	462
2-3/4	465
3	475

ANCHOR EMBEDMENT DEPTH	CONCRETE SHEAR
1	206
1-1/4	207
1-1/2	256
1-3/4	269
2	370
2-1/4	462
2-3/4	465
3	475

ANCHOR EMBEDMENT DEPTH	CONCRETE SHEAR
1	206
1-1/4	207
1-1/2	256
1-3/4	269
2	370
2-1/4	462
2-3/4	465
3	475

ANCHOR EMBEDMENT DEPTH	CONCRETE SHEAR
1	206
1-1/4	207
1-1/2	256
1-3/4	269
2	370
2-1/4	462
2-3/4	465
3	475

ANCHOR EMBEDMENT DEPTH	CONCRETE SHEAR
1	206
1-1/4	207
1-1/2	256
1-3/4	269
2	370
2-1/4	462
2-3/4	465
3	475

ANCHOR EMBEDMENT DEPTH	CONCRETE SHEAR
1	206
1-1/4	207
1-1/2	256
1-3/4	269
2	370
2-1/4	462
2-3/4	465
3	475

ANCHOR EMBEDMENT DEPTH	CONCRETE SHEAR
1	206
1-1/4	207
1-1/2	256
1-3/4	269
2	370
2-1/4	462
2-3/4	465
3	475

ANCHOR EMBEDMENT DEPTH	CONCRETE SHEAR
1	206
1-1/4	207
1-1/2	256
1-3/4	269
2	370
2-1/4	462
2-3/4	465
3	475

ANCHOR EMBEDMENT DEPTH	CONCRETE SHEAR
1	206
1-1/4	207
1-1/2	256
1-3/4	269
2	370
2-1/4	462
2-3/4	465
3	475

ANCHOR EMBEDMENT DEPTH	CONCRETE SHEAR
1	206
1-1/4	207
1-1/2	256
1-3/4	269
2	370
2-1/4	462
2-3/4	465
3	475

ANCHOR EMBEDMENT DEPTH	CONCRETE SHEAR
1	206
1-1/4	207
1-1/2	256
1-3/4	269
2	370
2-1/4	462
2-3/4	465
3	475

ANCHOR EMBEDMENT DEPTH	CONCRETE SHEAR
1	206
1-1/4	207
1-1/2	256
1-3/4	269
2	370
2-1/4	462
2-3/4	465
3	475

ANCHOR EMBEDMENT DEPTH	CONCRETE SHEAR
1	206
1-1/4	207
1-1/2	256
1-3/4	269
2	370
2-1/4	462
2-3/4	465
3	475

ANCHOR EMBEDMENT DEPTH	CONCRETE SHEAR
1	206
1-1/4	207
1-1/2	256
1-3/4	269
2	370
2-1/4	462
2-3/4	465
3	475

ANCHOR EMBEDMENT DEPTH	CONCRETE SHEAR
1	206
1-1/4	207
1-1/2	256
1-3/4	269
2	370
2-1/4	462
2-3/4	465
3	475

ANCHOR EMBEDMENT DEPTH	CONCRETE SHEAR
1	206
1-1/4	207
1-1/2	256
1-3/4	269
2	370
2-1/4	462
2-3/4	465
3	475

ANCHOR EMBEDMENT DEPTH	CONCRETE SHEAR
1	206
1-1/4	207
1-1/2	256
1-3/4	269
2	370
2-1/4	462
2-3/4	465
3	475

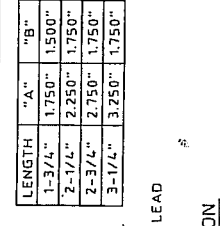
ANCHOR EMBEDMENT DEPTH	CONCRETE SHEAR
1	206
1-1/4	207
1-1/2	256
1-3/4	269
2	370
2-1/4	462
2-3/4	465
3	475

ANCHOR EMBEDMENT DEPTH	CONCRETE SHEAR
1	206
1-1/4	207
1-1/2	256
1-3/4	269
2	370
2-1/4	462
2-3/4	465
3	475

ANCHOR EMBEDMENT DEPTH	CONCRETE SHEAR
1	206
1-1/4	207
1-1/2	256
1-3/4	269
2	370
2-1/4	462
2-3/4	465
3	475

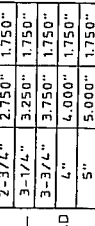
ANCHOR EMBEDMENT DEPTH	CONCRETE SHEAR
1	206
1-1/4	207
1-1/2	256
1-3/4	269
2	370
2-1/4	462
2-3/4	465
3	475

PRODUCT REVISED
 as complying with the Florida
 Building Code
 Acceptance No. 02-0583-07
 Expiration Date 08/06/06
 BY: [Signature]
 Division



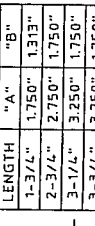
1/4" FLANGE HD TAPCON
 SCALE: FULL SIZE

LENGTH	"A"	"B"
1-1/4"	1.250"	.875"
1-3/4"	1.750"	1.313"
2-1/4"	2.250"	1.750"
2-3/4"	2.750"	1.750"
3-1/4"	3.250"	1.750"
4"	4.000"	1.750"



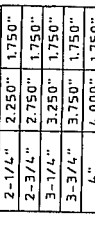
1/4" PHILLIPS FLAT HD TAPCON
 SCALE: FULL SIZE

LENGTH	"A"	"B"
1-1/4"	1.250"	1.000"
1-3/4"	1.750"	1.500"
2-1/4"	2.250"	1.750"
2-3/4"	2.750"	1.750"
3-1/4"	3.250"	1.750"
4"	4.000"	1.750"



1/4" TRIMFIT TAPCON
 SCALE: FULL SIZE

LENGTH	"A"	"B"
1-1/4"	1.250"	1.000"
1-3/4"	1.750"	1.500"
2-1/4"	2.250"	1.750"
2-3/4"	2.750"	1.750"
3-1/4"	3.250"	1.750"
4"	4.000"	1.750"
5"	5.000"	1.750"
6"	6.000"	1.750"



1/4" SLOTTED HEX WASHER HD TAPCON
 SCALE: FULL SIZE

ANCHOR EMBEDMENT DEPTH	CONCRETE TENSION	HOLLOW CONCRETE BLOCK TENSION
1	206	-
1-1/4	207	-
1-1/2	256	235
1-3/4	269	184
2	370	-
2-1/4	462	218
2-3/4	465	398
3	475	330

ANCHOR EMBEDMENT DEPTH	CONCRETE SHEAR
1	206