

G

ulfport



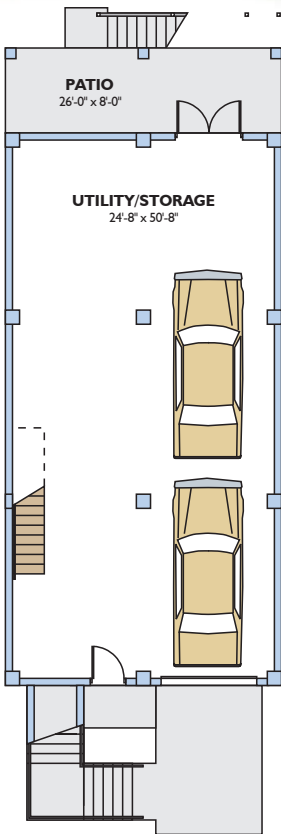
ENERGY WISE HOMES



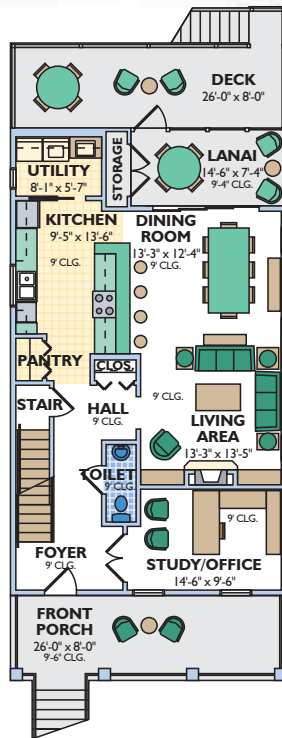
The raised floor and break-away lower walls make this home perfect for coastal areas.

The spacious kitchen has a peninsular counter top with built in bar; overlooking large dining and living room spaces.

Features include a large master suite, dedicated office, cozy fireplace and several outdoor areas to enjoy the fresh air.

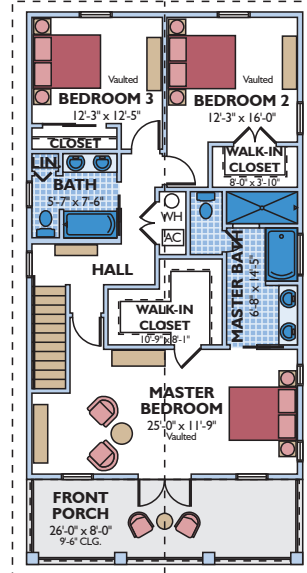


▲ GROUND FLOOR PLAN



◀ FIRST FLOOR PLAN

SECOND FLOOR PLAN ▼



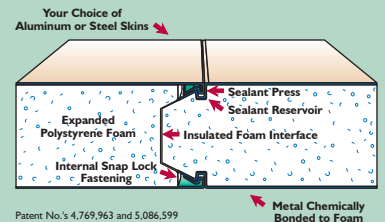
OVERALL DIMENSIONS

26'-0" x 76'-0"

1st Flr. Living	1,037 sq.ft.	Covered Porch & Lanai	524 sq.ft.
2nd Flr. Living	1,144 sq.ft.	Deck & Patio	416 sq.ft.
Utility	1,352 sq.ft.		
TOTAL - 4,473 sq.ft.		3 story, 3 bedroom, 2-1/2 bath	

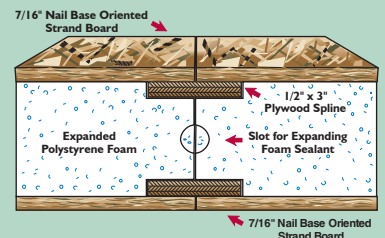
Structall offers a complete line of precut and preengineered home and building packages utilizing structural insulated panel technology (SIPs). All packages erect quickly, are stronger than conventional framing and extremely energy efficient. SIPs can be clad in conventional OSB or in steel incorporating the patented Snap-N-Lock panel connection.

Snap-N-Lock™ Insulated Panel



Patent No.'s 4,769,963 and 5,086,599

Dual Plywood Spline Joint



Plans and specifications are subject to change without notice. All dimensions are approximate.