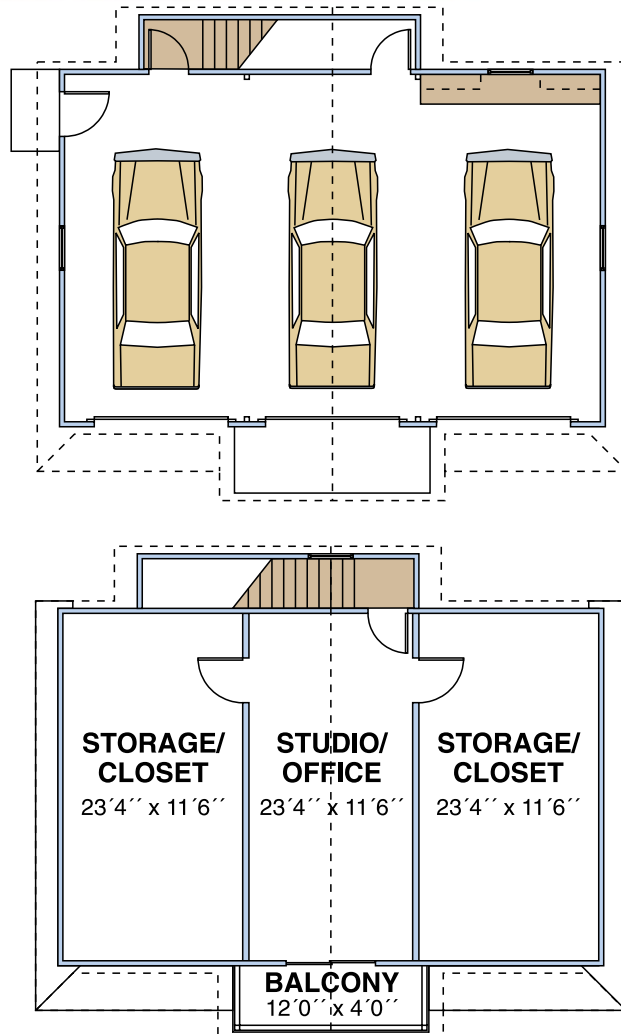
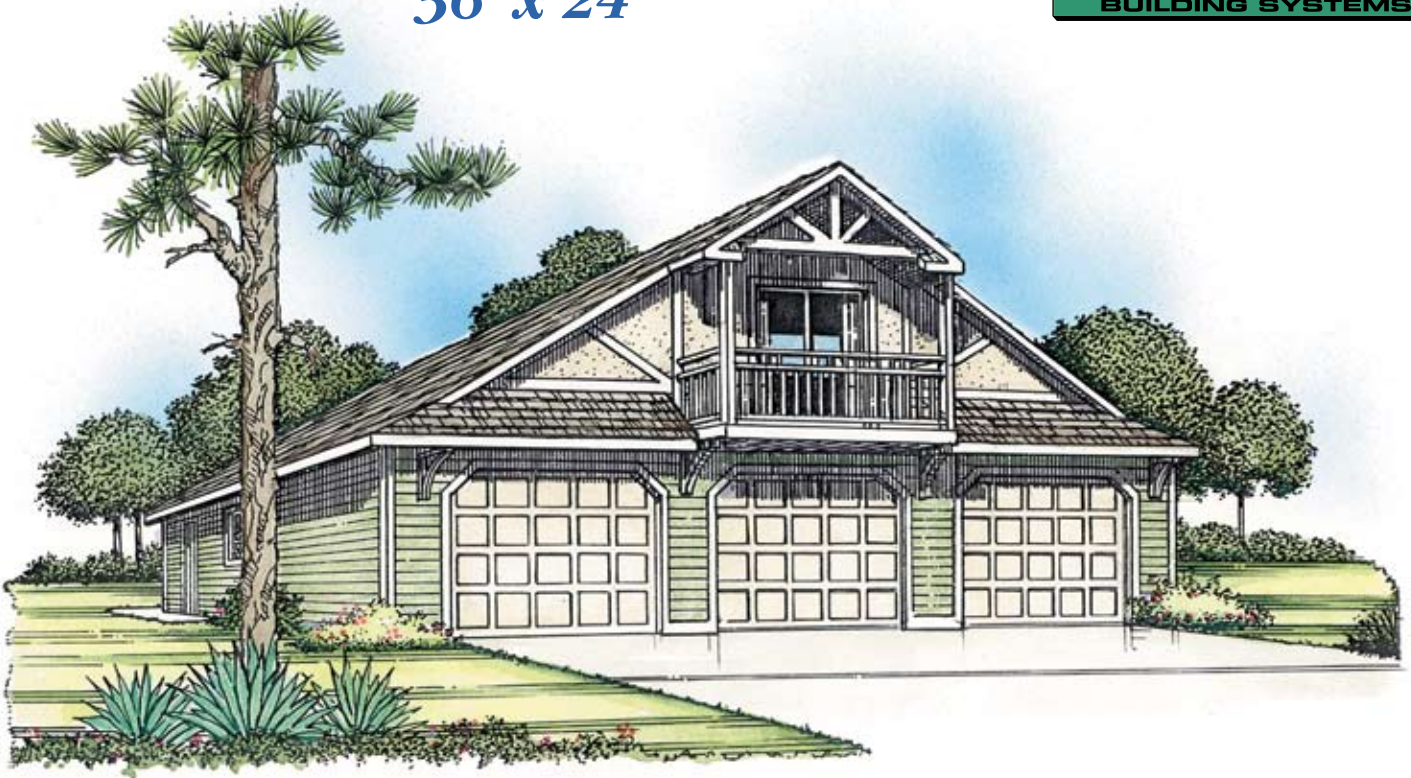


# 3 Car Garage with Flex-Space

## 36' x 24'



The upper level of our basic three car garage has been converted into flex-space. Use as an apartment, den or study, game room, or possibly an office. A convenient stair access has also been added in the rear of the unit.

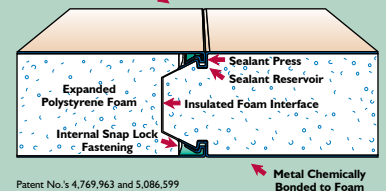
Structall offers a complete line of precut and preengineered garage packages utilizing structural insulated panel (SIP) technology. All packages erect quickly, are stronger than conventional framing, and are extremely energy efficient.

The high energy efficiency of Structall's patented Snap-N-Lock™ panel is due to the continuous foam interface design at the panel joint. The joint also allows for faster & easier installation - the male and female edges of the panel snap together quickly & easily.

Snap-N-Lock™ panel structures also withstand wind and storm damage better than conventionally built structures.

### Snap-N-Lock™ Insulated Panel

Your Choice of Aluminum or Steel Skins



Patent No.'s 4,769,963 and 5,086,599



Plans and specifications are subject to change without notice. All dimensions are approximate.