

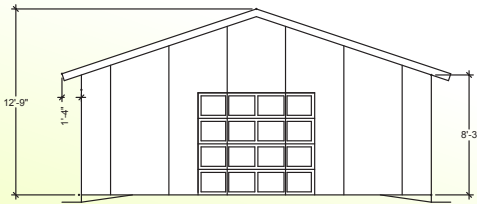
structall

shell packages

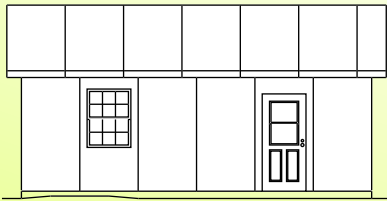
24' x 24' Shell Standard Model

576 sq.ft. - Roof Pitch 4:12

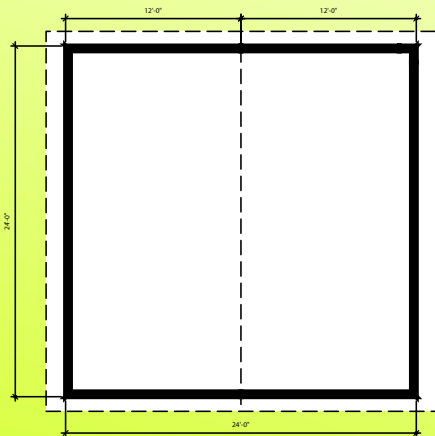
Call for Pricing*



Front

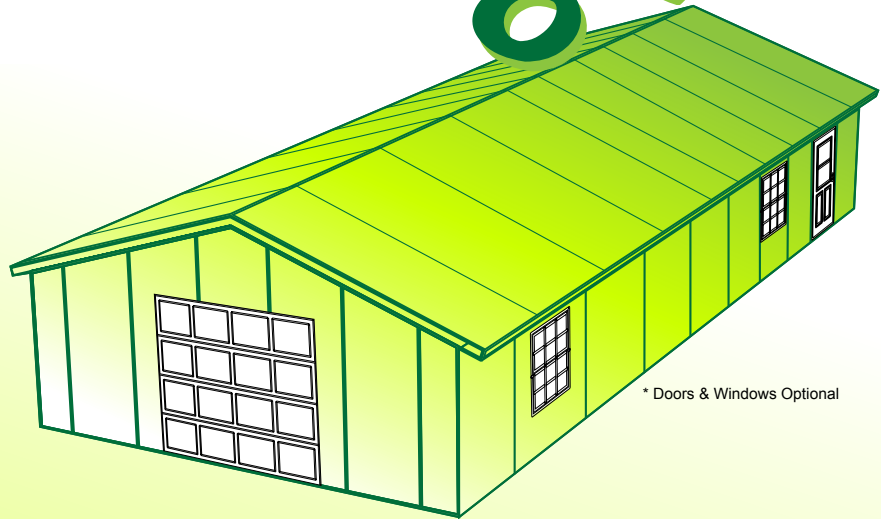


Side



Plan

* Doors & Windows Optional

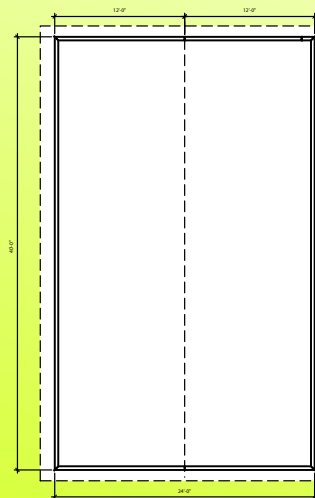


* Doors & Windows Optional

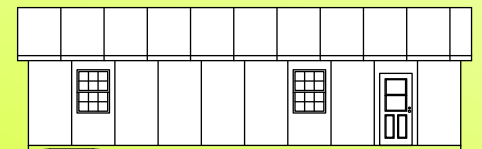
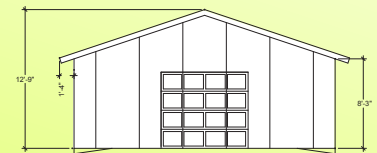
24' x 40' Shell Standard Model

960 sq.ft. - Roof Pitch 4:12

Call for Pricing*



Plan



Side

* Doors & Windows Optional

Structall Building Systems
 350 Burbank Rd, Oldsmar, FL 34677
 1-800-969-3706



Shell Packages

All Shell Packages include:

- 4" Wall Panels and 6" Roof Panels
- All Channels, Extrusions, Extruded Fascia, and Panel Flashing
- Any Required Beams and Load-Bearing Walls
- All Fasteners and Caulking
- Pre-cut Gable Wall and Side Wall
- Pre-cut Roof Panel

Windows and Doors Optional.

Prices do not include engineering.

Prices do not include freight.

Prices do not include any applicable taxes.

12' x 12' - Call for Pricing 144 sq.ft. - Roof Pitch 2:12		12' x 16' - Call for Pricing 192 sq.ft. - Roof Pitch 2:12		12' x 20' - Call for Pricing 240 sq.ft. - Roof Pitch 2:12	
Wall Panels .026 ga Steel 4" R16 Foam	Misc. Materials 4" Receiving Channel 4" Rec. Channel 4" Base Channel 6" Fascia Trim Equal Angle Wall Cap 7" SIP Fastener #10 Hex Wshr Head 3" Wedge Anchor Structall Pro-Seal 6" Flex-Seal Tape	Wall Panels .026 ga Steel 4" R16 Foam	Misc. Materials 4" Receiving Channel 4" Rec. Channel 4" Base Channel 6" Fascia Trim Equal Angle Wall Cap 7" SIP Fastener #10 Hex Wshr Head 3" Wedge Anchor Structall Pro-Seal 6" Flex-Seal Tape	Wall Panels .026 ga Steel 4" R16 Foam	Misc. Materials 4" Receiving Channel 4" Rec. Channel 4" Base Channel 6" Fascia Trim Equal Angle Wall Cap 7" SIP Fastener #10 Hex Wshr Head 3" Wedge Anchor Structall Pro-Seal 6" Flex-Seal Tape
10' x 4' 9' 4" x 4' 8' 8" x 4' 8' x 4'		10' x 4' 9' 4" x 4' 8' 8" x 4' 8' x 4'		10' 9" x 4' 9' 4" x 4' 8' 8" x 4' 8' x 4'	
Roof Panels .026 ga Steel 6" R24 Foam		Roof Panels .026 ga Steel 6" R24 Foam		Roof Panels .026 ga Steel 6" R24 Foam	
14' 4" x 4'		14' 4" x 4'		14' 4" x 4'	

12' x 24' - Call for Pricing 288 sq.ft. - Roof Pitch 2:12		12' x 28' - Call for Pricing 336 sq.ft. - Roof Pitch 2:12		16' x 16' - Call for Pricing 256 sq.ft. - Roof Pitch 3:12		16' x 20' - Call for Pricing 320 sq.ft. - Roof Pitch 3:12	
Wall Panels .026 ga Steel 4" R16 Foam	Misc. Materials 4" Receiving Channel 4" Rec. Channel 4" Base Channel 6" Fascia Trim Equal Angle Wall Cap 7" SIP Fastener #10 Hex Wshr Head 3" Wedge Anchor Structall Pro-Seal 6" Flex-Seal Tape	Wall Panels .026 ga Steel 4" R16 Foam	Misc. Materials 4" Receiving Channel 4" Rec. Channel 4" Base Channel 6" Fascia Trim Equal Angle Wall Cap 7" SIP Fastener #10 Hex Wshr Head 3" Wedge Anchor Structall Pro-Seal 6" Flex-Seal Tape	Wall Panels .026 ga Steel 4" R16 Foam	Misc. Materials 4" Receiving Channel 4" Rec. Channel 4" Base Channel 6" Fascia Trim Equal Angle 4" Wall Cap Ridge Cap Wall Cap Bent Plate 7" SIP Fastener #10 Hex Wshr Head 3" Wedge Anchor Structall Pro-Seal 6" Flex-Seal Tape 12" Galv Stud 3-5/8" Galv Stud	Wall Panels .026 ga Steel 4" R16 Foam	Misc. Materials 4" Receiving Channel 4" Rec. Channel 4" Base Channel 6" Fascia Trim Equal Angle 4" Wall Cap Ridge Cap Wall Cap Bent Plate 7" SIP Fastener #10 Hex Wshr Head 3" Wedge Anchor Structall Pro-Seal 6" Flex-Seal Tape 12" Galv Stud 3-5/8" Galv Stud
10' x 4' 9' 4" x 4' 8' 8" x 4' 8' x 4'		10' x 4' 9' 4" x 4' 8' 8" x 4' 8' x 4'		10' x 4' 9' x 4' 8' x 4'		10' x 4' 9' x 4' 8' x 4'	
Roof Panels .026 ga Steel 6" R24 Foam		Roof Panels .026 ga Steel 6" R24 Foam		Roof Panels .026 ga Steel 6" R24 Foam		Roof Panels .026 ga Steel 6" R24 Foam	
14' 4" x 4'		14' 4" x 4'		9' 5" x 4'		9' 5" x 4'	

24' x 24' - Call for Pricing 576 sq.ft. - Roof Pitch 4:12		24' x 32' - Call for Pricing 768 sq.ft. - Roof Pitch 4:12		24' x 40' - Call for Pricing 960 sq.ft. - Roof Pitch 4:12		28' x 32' - Call for Pricing 896 sq.ft. - Roof Pitch 4:12	
Wall Panels .026 ga Steel 4" R16 Foam	Misc. Materials 4" Top Cap 4" Receiving Channel 4" Base Channel 6" Fascia Trim Equal Angle 4" Ridge Cap Ridge Flashing 7" SIP Fastener #10 Hex Wshr Head 3" Wedge Anchor Structall Pro-Seal 6" Flex-Seal Tape 4" x 4" Steel Post 12" Galv Stud 3-5/8" Galv Stud 3-5/8" Galv Track	Wall Panels .026 ga Steel 4" R16 Foam	Misc. Materials 4" Top Cap 4" Receiving Channel 6" Fascia Trim Equal Angle 4" Ridge Cap Ridge Flashing 7" SIP Fastener #10 Hex Wshr Head 3" Wedge Anchor Structall Pro-Seal 6" Flex-Seal Tape 4" x 4" Steel Post 12" Galv Stud 3-5/8" Galv Stud 3-5/8" Galv Track	Wall Panels .026 ga Steel 4" R16 Foam	Misc. Materials 4" Top Cap 4" Receiving Channel 6" Fascia Trim Equal Angle 4" Ridge Cap Ridge Flashing 7" SIP Fastener #10 Hex Wshr Head 3" Wedge Anchor Structall Pro-Seal 6" Flex-Seal Tape 4" x 4" Steel Post 12" Galv Stud 3-5/8" Galv Stud 3-5/8" Galv Track	Wall Panels .026 ga Steel 4" R16 Foam	Misc. Materials 4" Top Cap 4" Receiving Channel 6" Fascia Trim Equal Angle 4" Ridge Cap Ridge Flashing 7" SIP Fastener #10 Hex Wshr Head 3" Wedge Anchor Structall Pro-Seal 6" Flex-Seal Tape 4" x 4" Steel Post 12" Galv Stud 3-5/8" Galv Stud 3-5/8" Galv Track
8' 6" x 4' 24' 6" x 4' 22' x 4' 19' 6" x 4' 18' x 4'		8' 6" x 4' 24' 6" x 4' 22' x 4' 19' 6" x 4' 18' x 4'		9' 6" x 4' 24' 6" x 4' 22' x 4' 19' 6" x 4' 18' x 4'		8' 6" x 4' 13' 6" x 4' 23' 6" x 4' 20' 6" x 4' 18' x 4'	
Roof Panels .026 ga Steel 6" R24 Foam		Roof Panels .026 ga Steel 6" R24 Foam		Roof Panels .026 ga Steel 6" R24 Foam		Roof Panels .026 ga Steel 6" R24 Foam	
14' x 4'		14' x 4'		14' x 4'		16' 6" x 4'	

28' x 40' - Call for Pricing 1120 sq.ft. - Roof Pitch 4:12		32' x 24' - Call for Pricing 768 sq.ft. - Roof Pitch 4:12		32' x 28' - Call for Pricing 896 sq.ft. - Roof Pitch 4:12		40' x 28' - Call for Pricing 1120 sq.ft. - Roof Pitch 4:12	
Wall Panels .026 ga Steel 4" R16 Foam	Misc. Materials 4" Top Cap 4" Receiving Channel 6" Fascia Trim Equal Angle 4" Ridge Cap Ridge Flashing 7" SIP Fastener #10 Hex Wshr Head 3" Wedge Anchor Structall Pro-Seal 6" Flex-Seal Tape 4" x 4" Steel Post 12" Galv Stud 3-5/8" Galv Stud 3-5/8" Galv Track	Wall Panels .026 ga Steel 4" R16 Foam	Misc. Materials 4" Top Cap 4" Receiving Channel 6" Fascia Trim Equal Angle 4" Ridge Cap Ridge Flashing 7" SIP Fastener #10 Hex Wshr Head 3" Wedge Anchor Structall Pro-Seal 6" Flex-Seal Tape 4" x 4" Steel Post 12" Galv Stud 3-5/8" Galv Stud 3-5/8" Galv Track	Wall Panels .026 ga Steel 4" R16 Foam	Misc. Materials 4" Top Cap 4" Receiving Channel 6" Fascia Trim Equal Angle 4" Ridge Cap Ridge Flashing 7" SIP Fastener #10 Hex Wshr Head 3" Wedge Anchor Structall Pro-Seal 6" Flex-Seal Tape 4" x 4" Steel Post 12" Galv Stud 3-5/8" Galv Stud 3-5/8" Galv Track	Wall Panels .026 ga Steel 4" R16 Foam	Misc. Materials 4" Top Cap 4" Receiving Channel 6" Fascia Trim Equal Angle 4" Ridge Cap Ridge Flashing 7" SIP Fastener #10 Hex Wshr Head 3" Wedge Anchor Structall Pro-Seal 6" Flex-Seal Tape 4" x 4" Steel Post 12" Galv Stud 3-5/8" Galv Stud 6" Galv Stud
8' 6" x 4' 13' 6" x 4' 23' 6" x 4' 20' 6" x 4' 18' x 4'		8' 6" x 4' 14' x 4' 23' x 4' 22' x 4' 19' 6" x 4' 18' x 4'		8' 6" x 4' 14' x 4' 25' x 4' 22' x 4' 19' 6" x 4' 18' x 4'		8' 6" x 4' 15' x 4' 27' 6" x 4' 24' 6" x 4' 22' x 4' 19' 6" x 4' 18' x 4'	
Roof Panels .026 ga Steel 6" R24 Foam		Roof Panels .026 ga Steel 6" R24 Foam		Roof Panels .026 ga Steel 6" R24 Foam		Roof Panels .026 ga Steel 6" R24 Foam	
16' 6" x 4'		18' 6" x 4'		18' 6" x 4'		22' 6" x 4'	